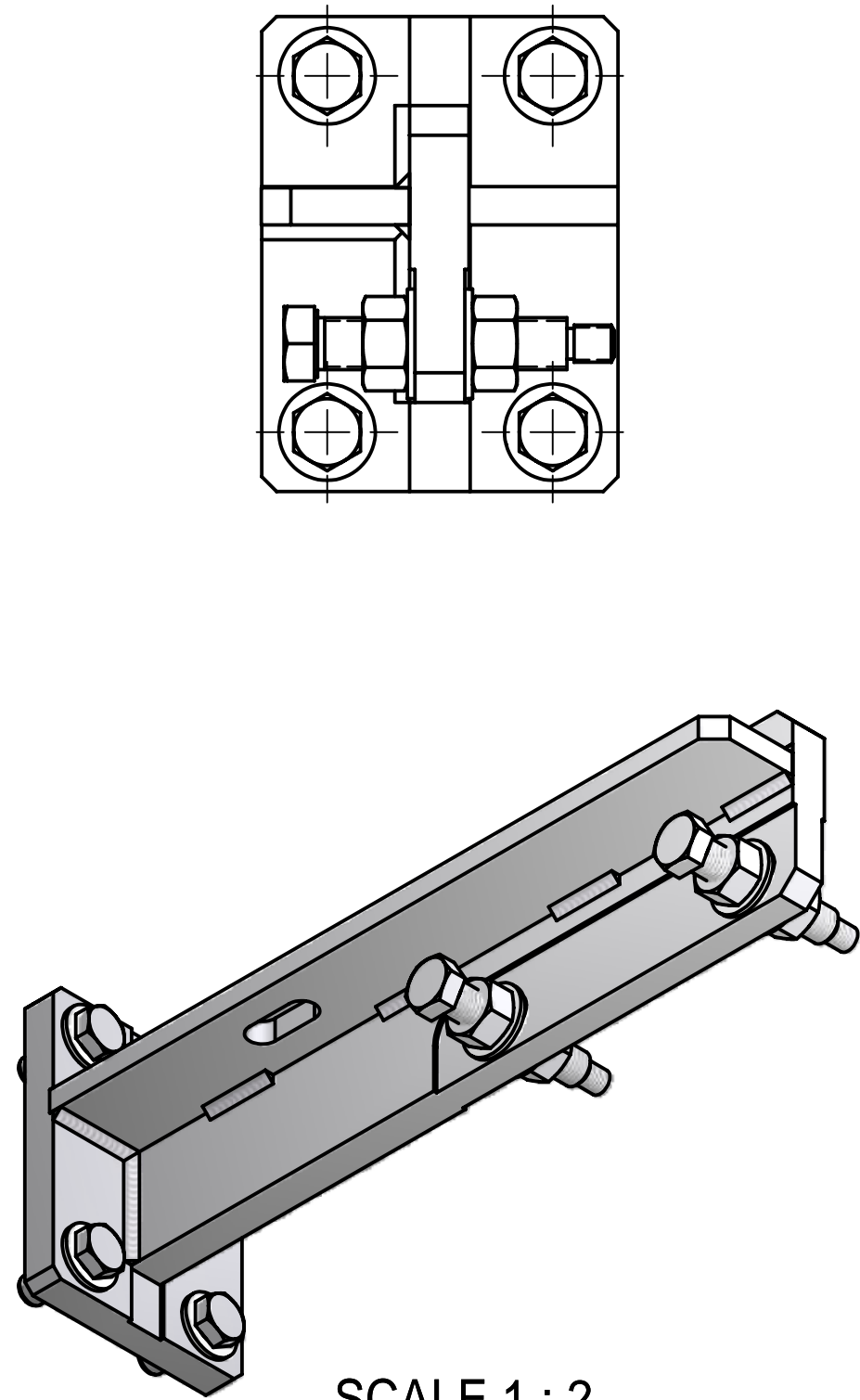
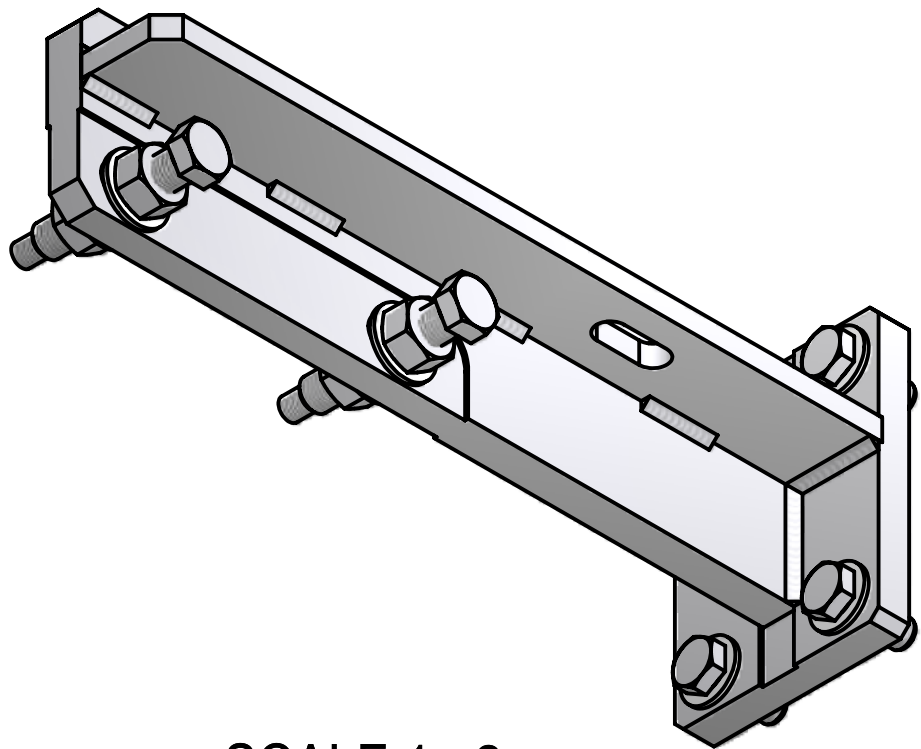
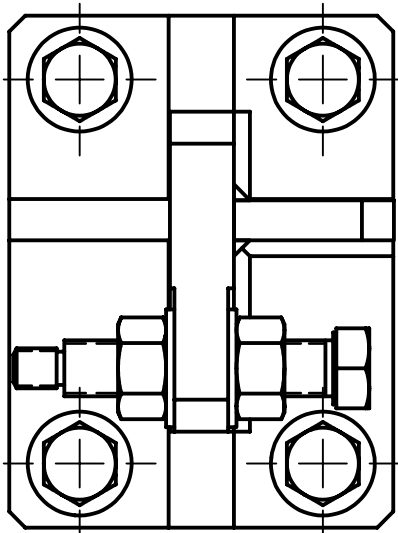


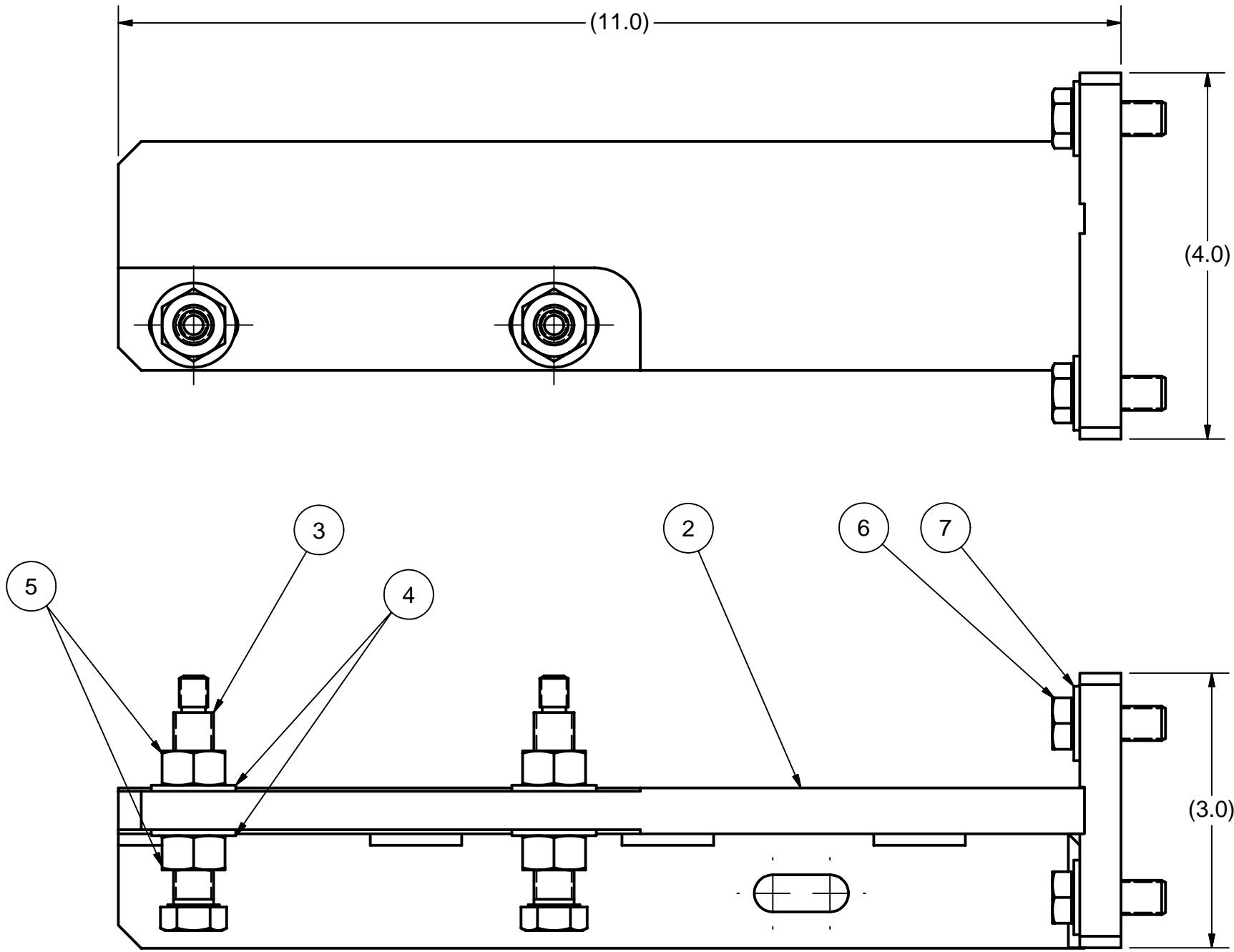
REVISIONS			
SYM.	ZONE	DESCRIPTION	DATE APP.



SCALE 1 : 2

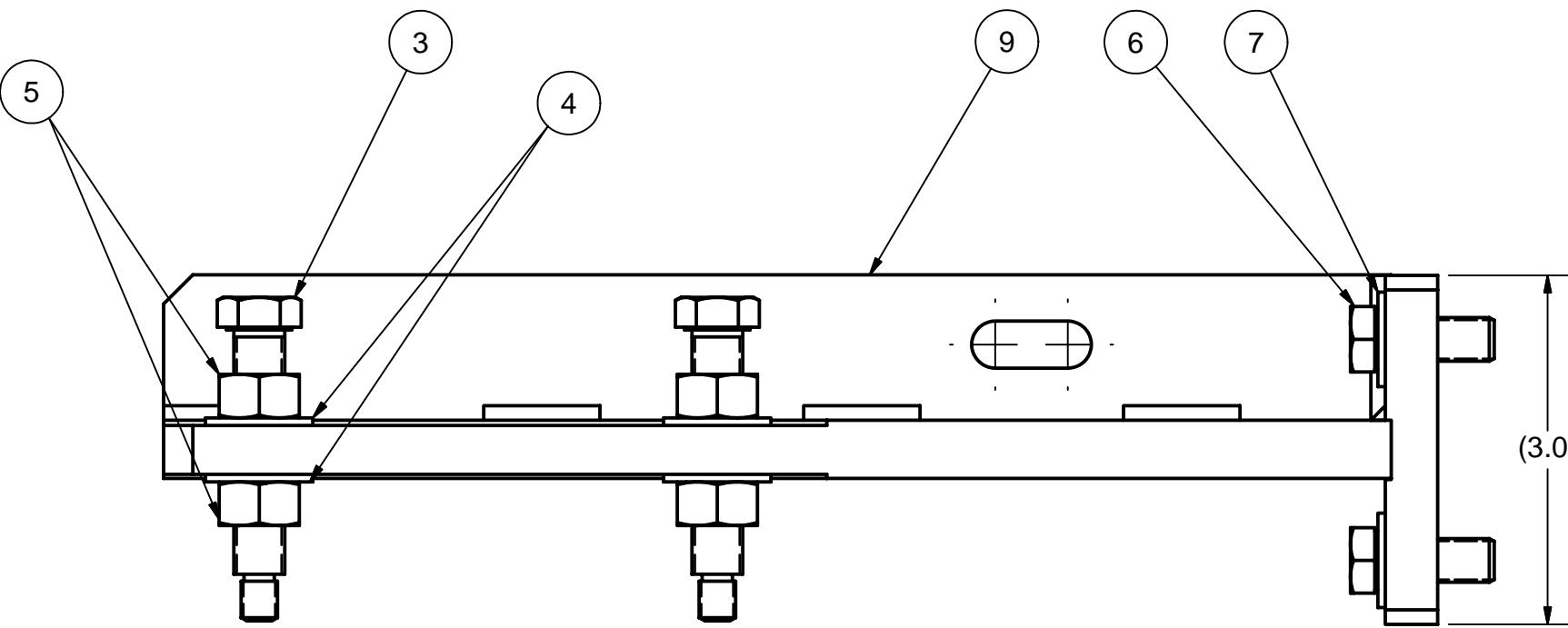
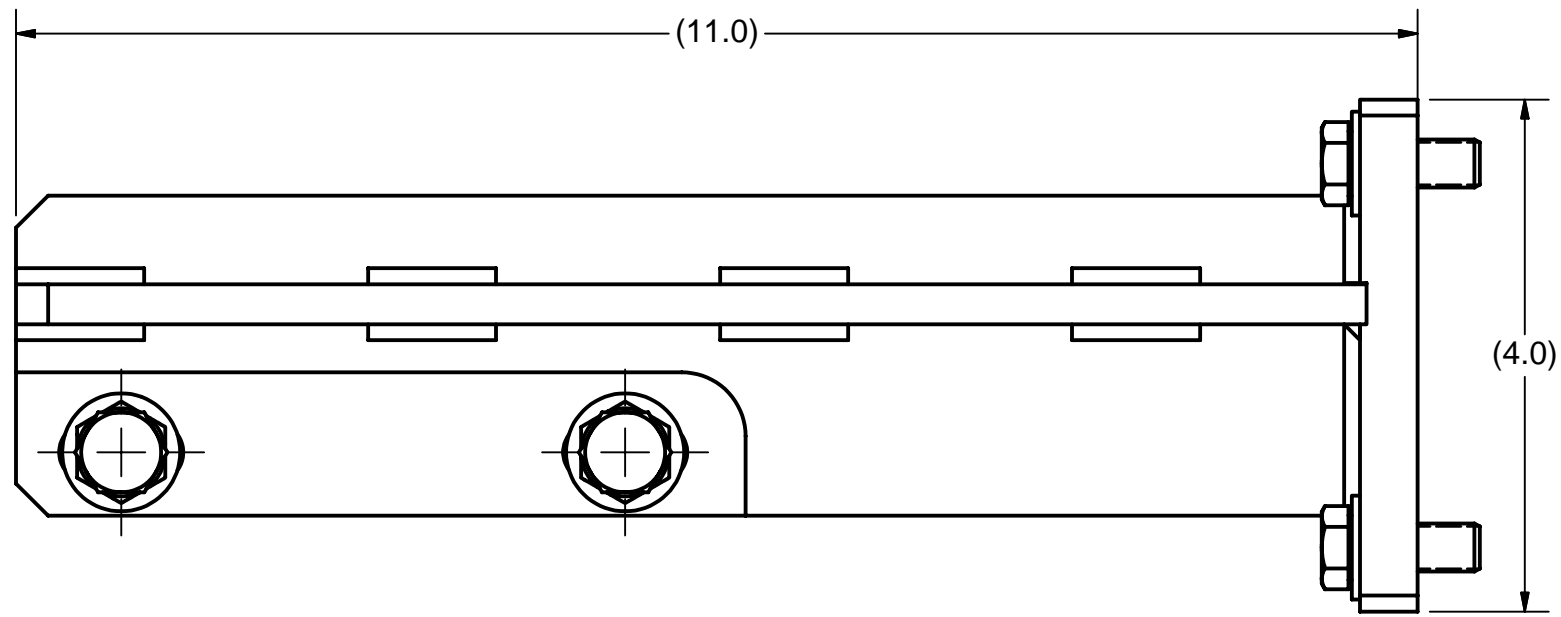


SCALE 1 : 2



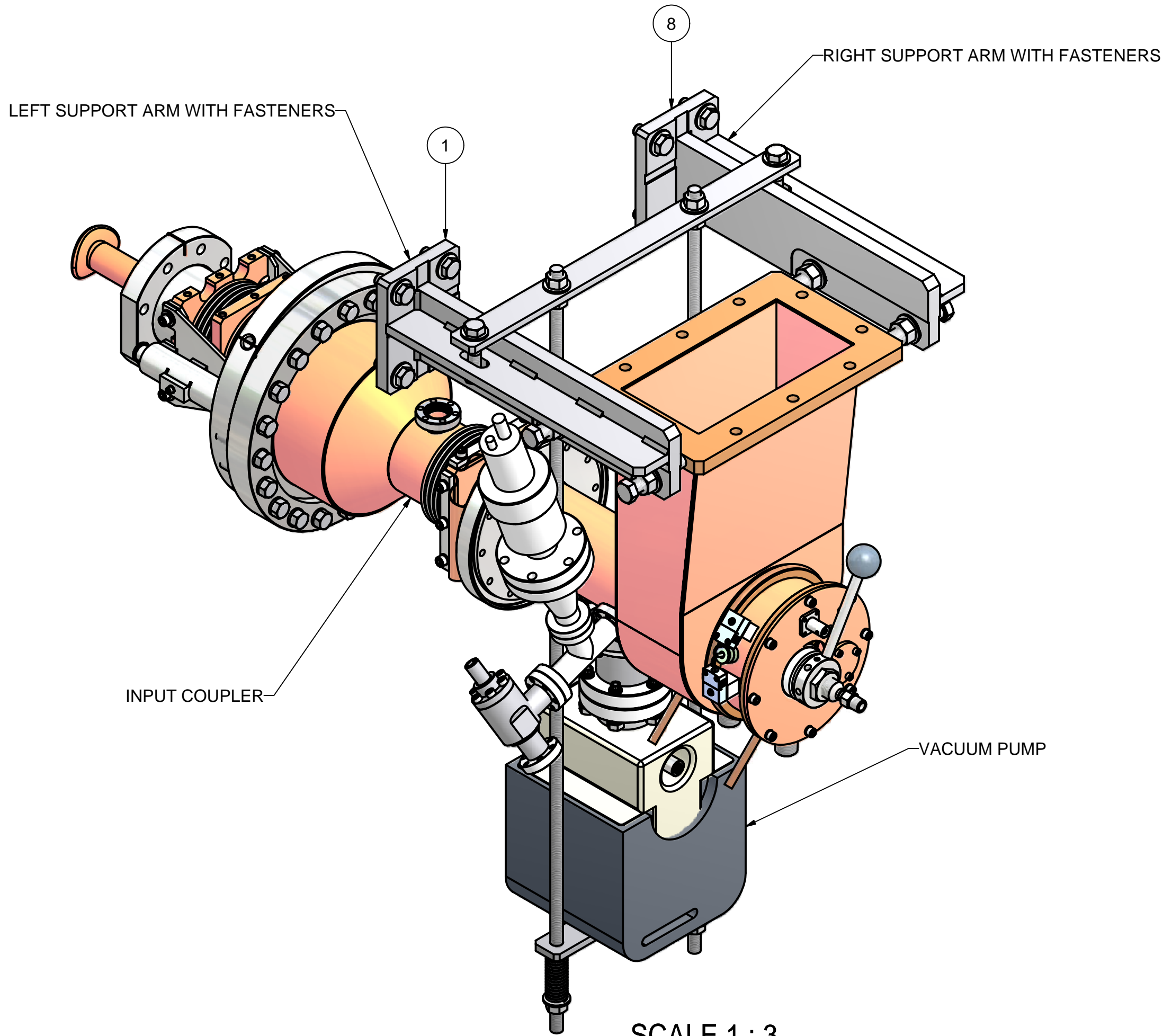
1 LEFT SUPPORT ARM W/ FASTENERS, ASSEMBLY

FILE NAME: 7102-043  
SHEET NO.: 1  
DFT. SCALE: 1:1.5  
MATERIAL: AS NOTED  
QTY: AS REQ'D  
NOTES:



8 RIGHT SUPPORT ARM W/ FASTENERS, ASSEMBLY

FILE NAME: 7102-043  
SHEET NO.: 1  
DFT. SCALE: 1:1.5  
MATERIAL: AS NOTED  
QTY: AS REQ'D  
NOTES:



SCALE 1 : 3

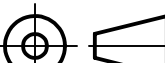





COUPLER WAVEGUIDE SUPPORT IS SHOWN HERE IN AN ASSEMBLY VIEW WITH THE INPUT COUPLER (#7102-003) AND THE COUPLER PUMP SUPPORT (#7102-044)

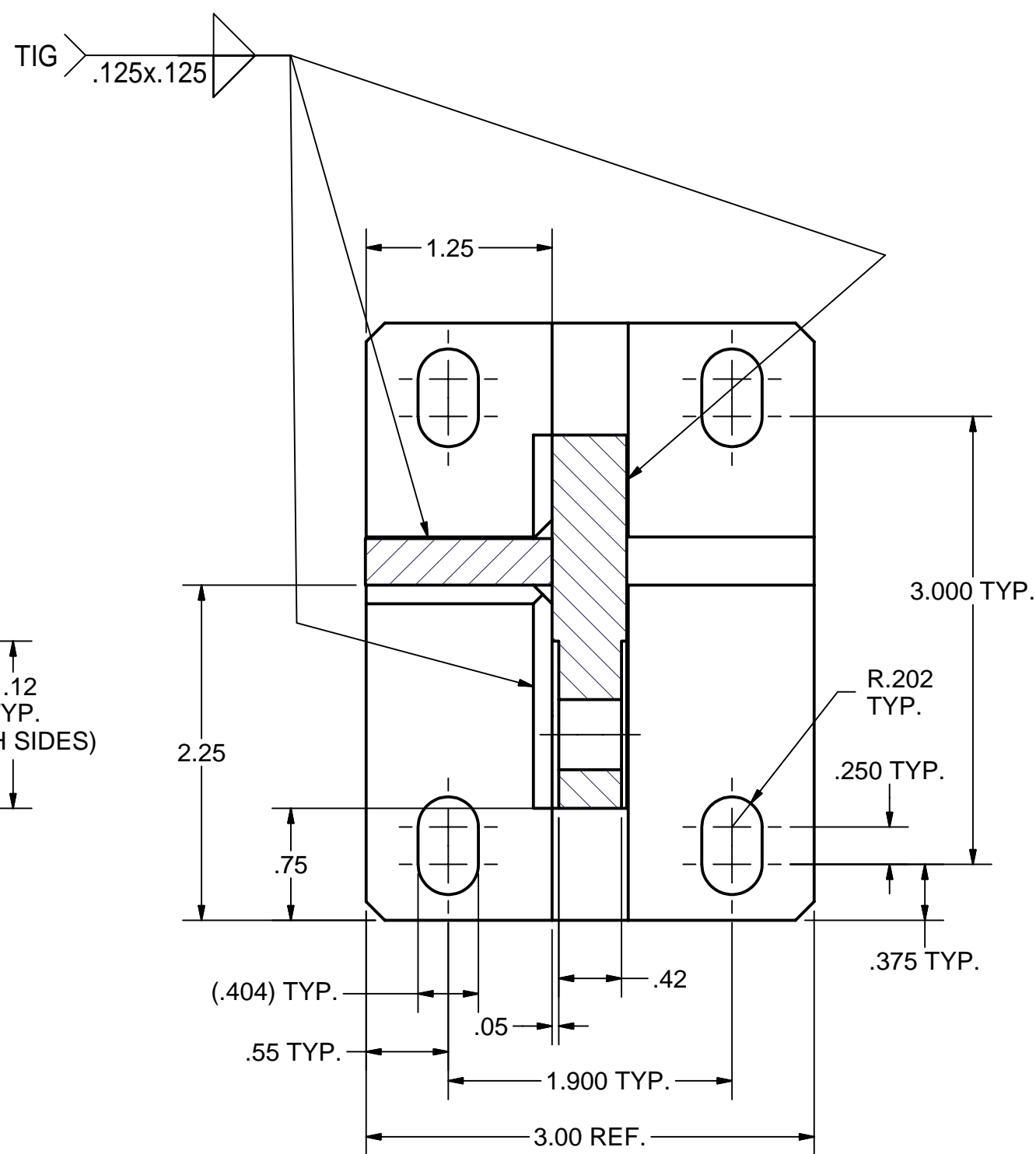
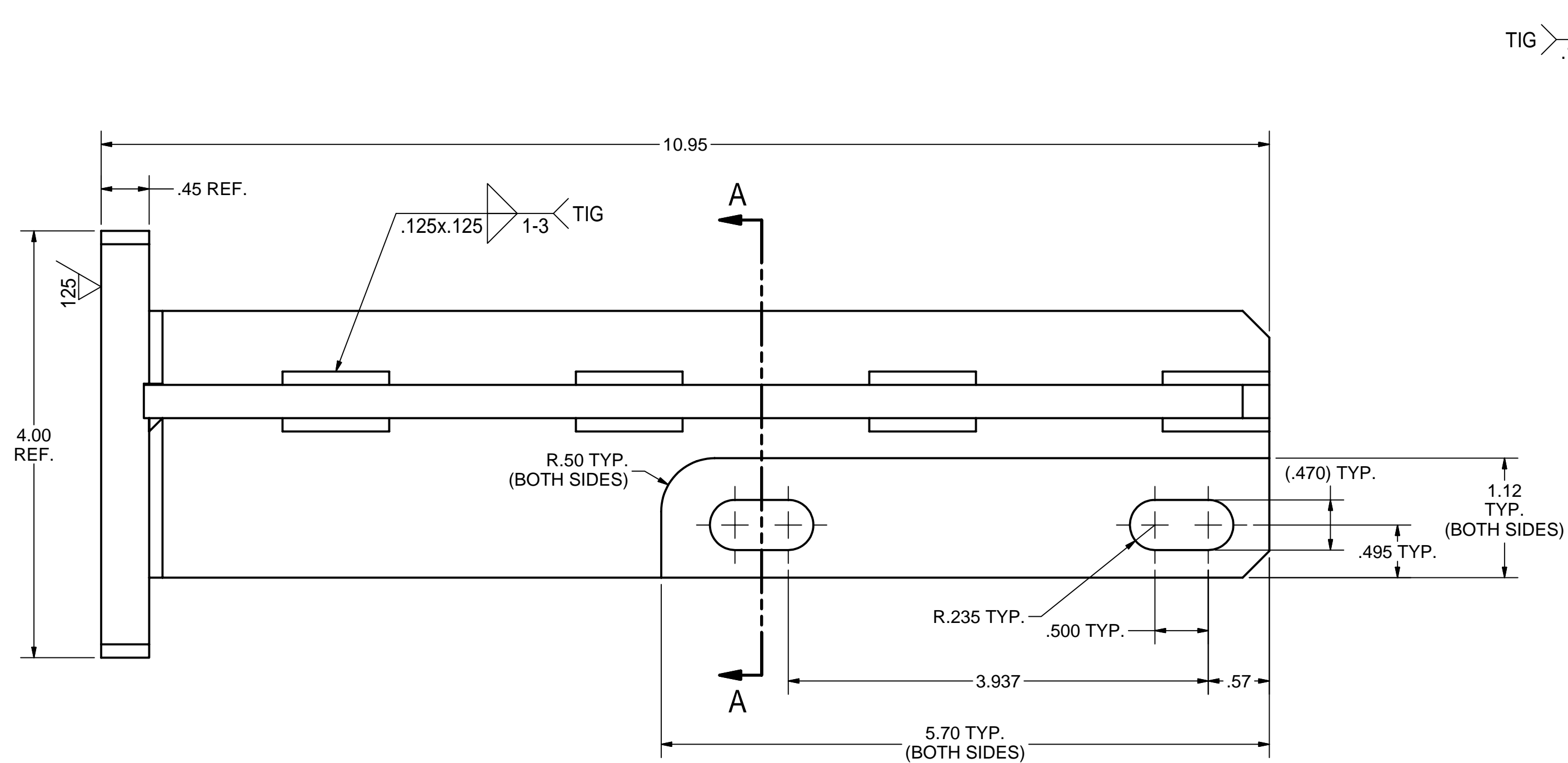
Release of final PO version for Meyer Tool - June 19, 2007.

9	SHEET 3	RIGHT SUPPORT ARM, SUB-ASM		1			
8	SHEET 1	RIGHT SUPPORT ARM WITH FASTENERS, ASM		X			
7	PURCHASED	3/8 Plain Washer	4	4		Stn. Stl.	
6	PURCHASED	3/8-24 UNF x 1 Hex Cap Screw	4	4		Stn. Stl.	
5	PURCHASED	7/16-20 UNF Hex Nut	4	4		Stn. Stl.	
4	PURCHASED	7/16 Plain Washer	4	4		Stn. Stl.	
3	SHEET 4	SUPPORT SCREW	2	2			
2	SHEET 2	LEFT SUPPORT ARM, SUB-ASM	1				
1	SHEET 1	LEFT SUPPORT ARM WITH FASTENERS, ASM	X				

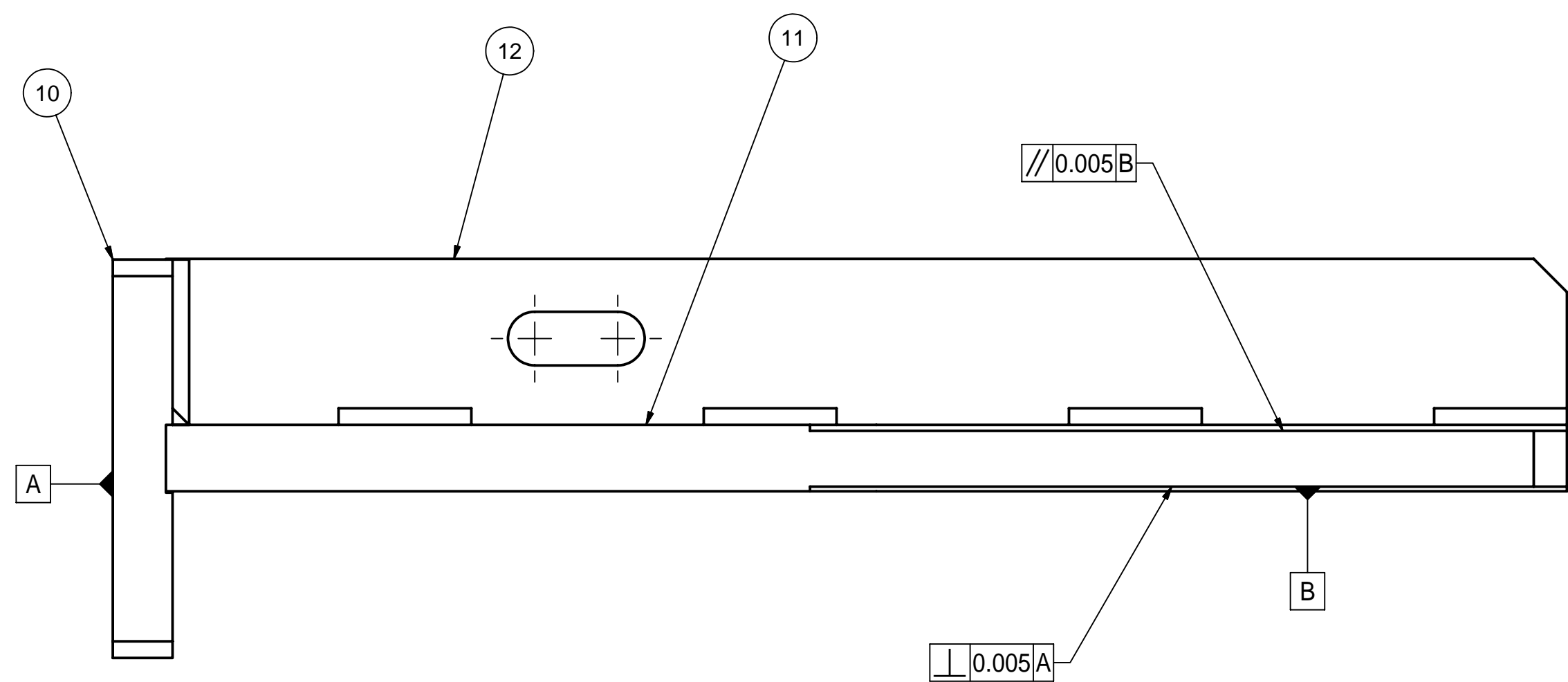
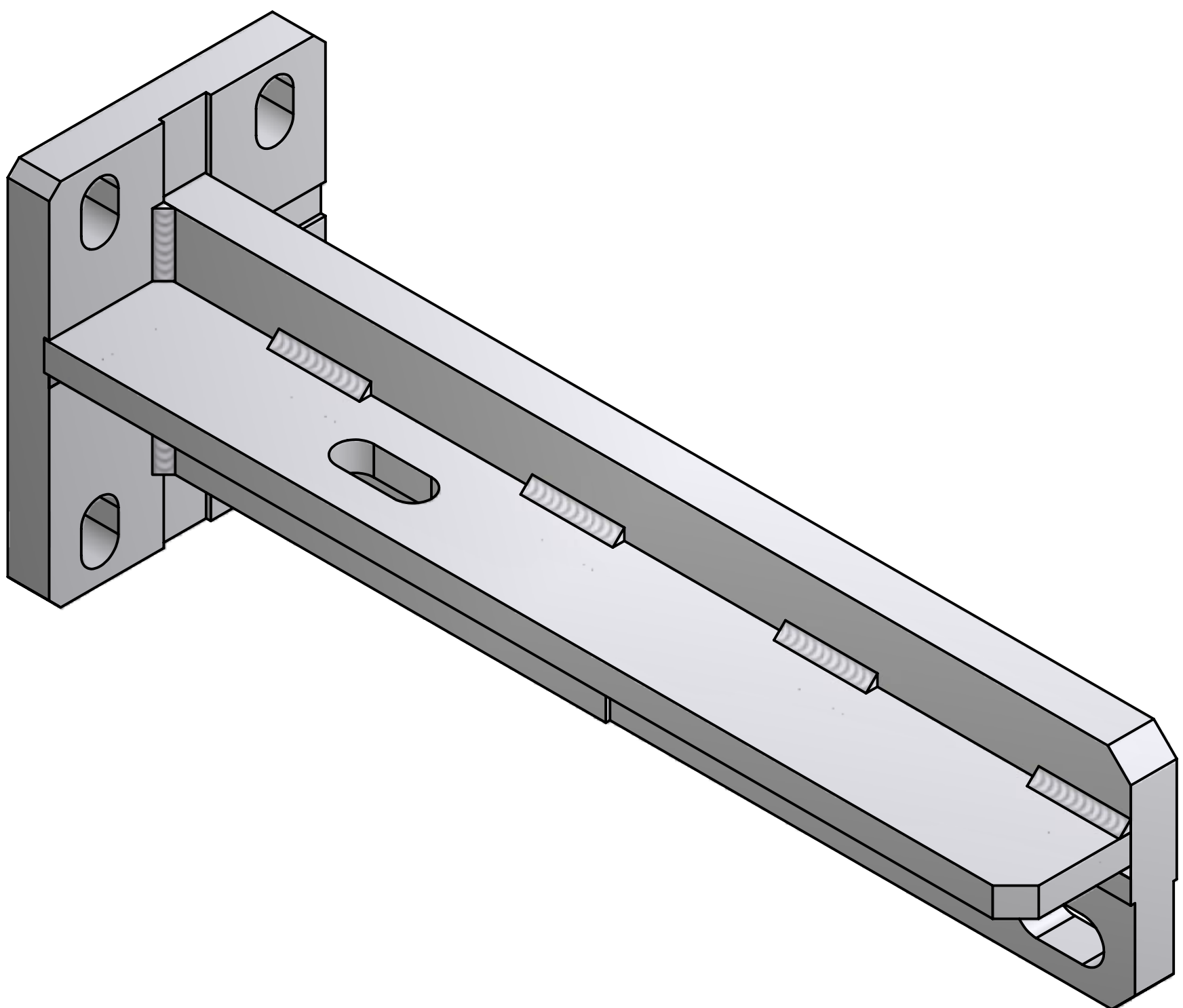
FOR MACHINING LUBRICANT USE ONLY  
ALKALINE DETERGENT LUBRICANT CIMSTAR 40  
OR EQUIVALENT APPROVED BY CORNELL LEPP

TECHNICAL RESOURCE APPROVALS REQUIRED BEFORE FABRICATION			
	OK	DATE	N/A
DRAFTING (O'Connell):			
MACHINE SHOP (Kaminski):			
CHEMISTRY (Conklin):			
ELECTRONICS SHOP (Barley):			
FURNACE BRAZING (Sherwood):			
BEAM WELDING (Sears):			
WELDING OTHER (Gallagher):			
UTILITIES INTEGRATION (Gallagher):			
STOCKROOMS (Lockwood):			

	ITEM	DWG. NO.	DESCRIPTION			G1	G2	G3	REMARKS	REV.
							QUANTITY			
	PRINT DISTR.	PLOT DATE: 6/19/2007 CAD FILE NAME: 7102-043.idw								
		CR-1	<div>UNLESS OTHERWISE SPECIFIED:</div> <div>DIMENSIONS ARE IN INCHES; TOLERANCES ON:     .0 ± .02     .00 ± .010     .000 ± .005 FRACTIONS ± 1/32 ANGLES ± 0.5° ALL SURFACES </div> <div><div><div> </div><div>CORNELL UNIVERSITY Floyd R. Newman Laboratory Ithaca, NY 14853</div></div><div>INPUT COUPLER WAVEGUIDE SUPPORT: LEFT AND RIGHT SUPPORT ARMS WITH FASTENERS</div></div>							
7102-043 SH. NO. 1 OF 4			DRAWN BY VGV	DRAWN FOR SAB	DATE 2/5/2007	SCALE 1 : 1.5		7102-043		REV.
								SH. NO. 1 OF 4		
REV.			CHECKED BY: VM							
			APPROVED BY: MUL							



## SECTION A-A




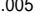

2 LEFT SUPPORT ARM, SUB-ASSEMBLY

FILE NAME: 7102-043  
SHEET NO.: 2  
DFT. SCALE: 1:1  
MATERIAL: AS NOTED  
QTY: AS REQ'D  
NOTES: 1. MACHINE AFTER WELDING

Release of final PO version for Meyer Tool - June 19, 2007.

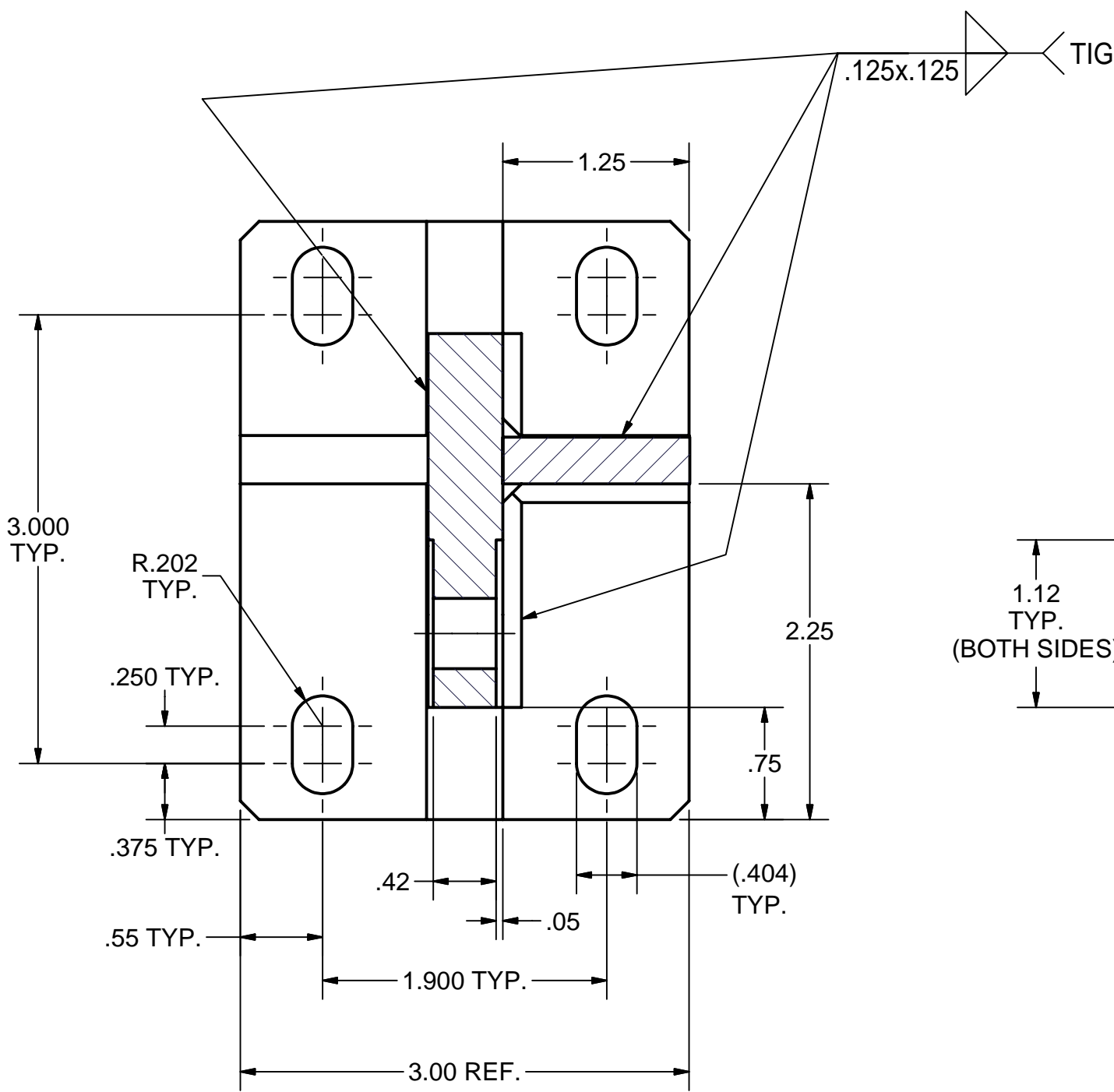
[illegible]

TECHNICAL RESOURCE APPROVALS REQUIRED BEFORE FABRICATION			
	OK	DATE	N/A
DRAFTING (O'Connell):			
MACHINE SHOP (Kaminski):			
CHEMISTRY (Konklin):			
ELECTRONICS SHOP (Barley):			
FURNACE BRAZING (Sherwood):			
BEAM WELDING (Sears):			
WELDING OTHER (Gallagher):			
UTILITIES INTEGRATION (Gallagher):			
STOCKROOMS (Lockwood):			

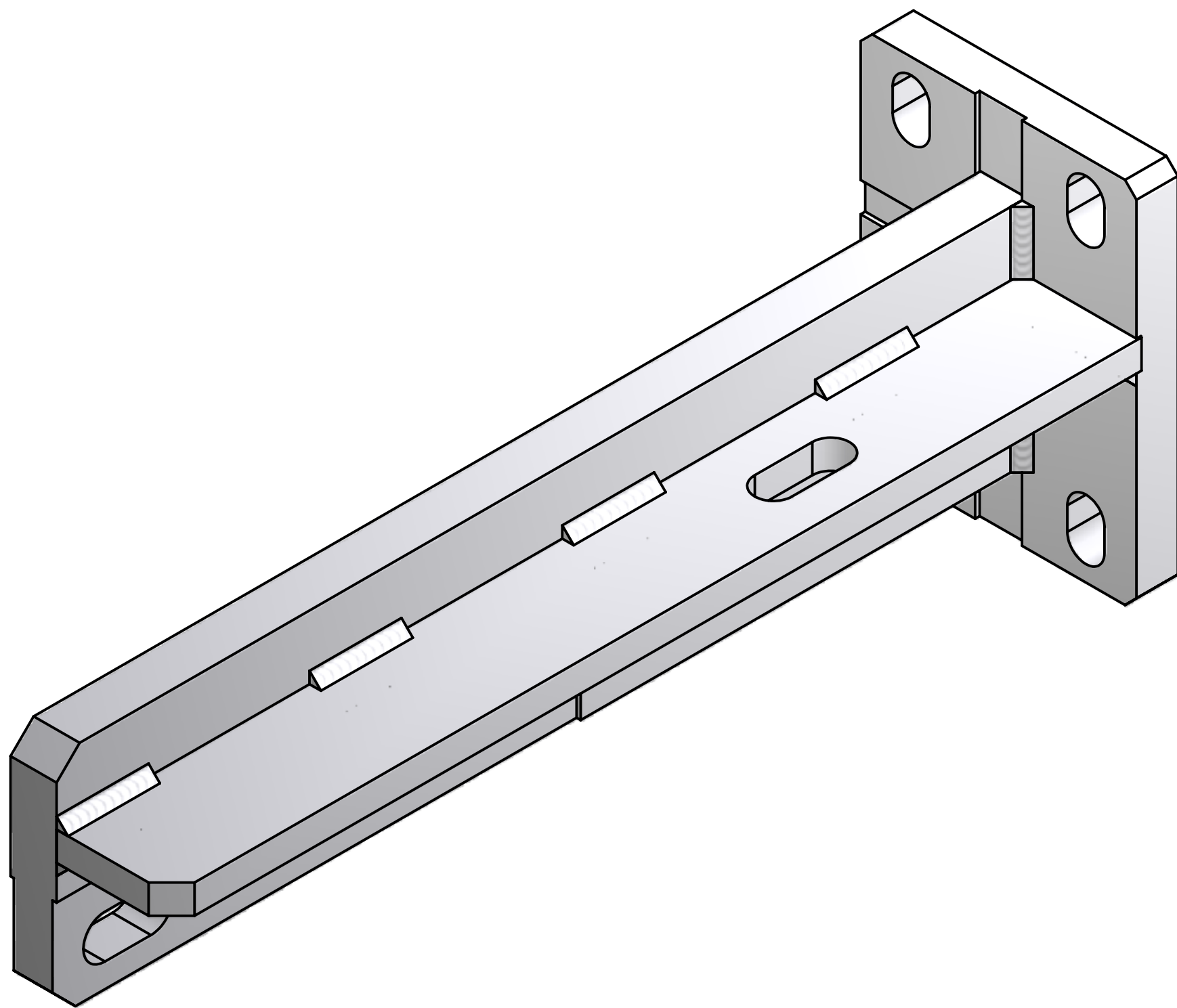
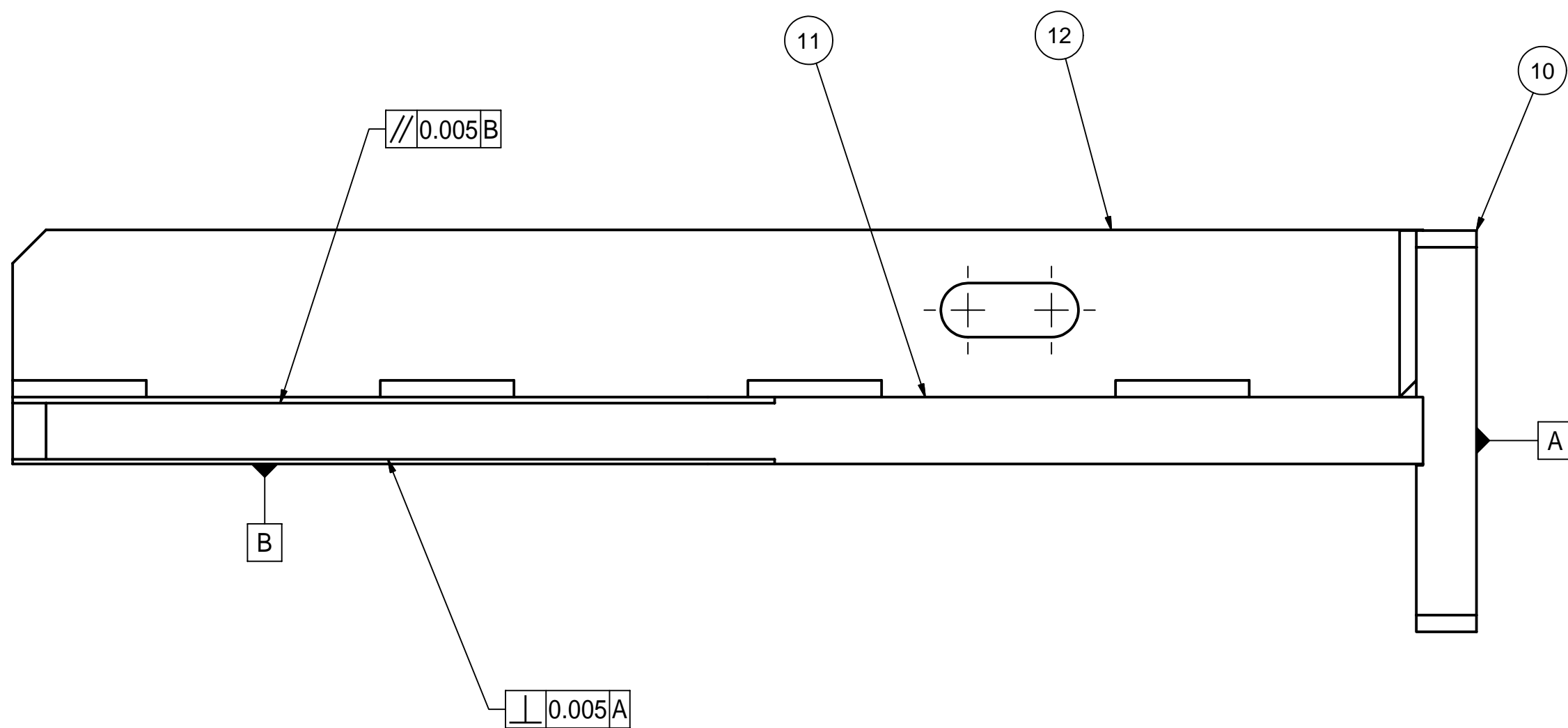
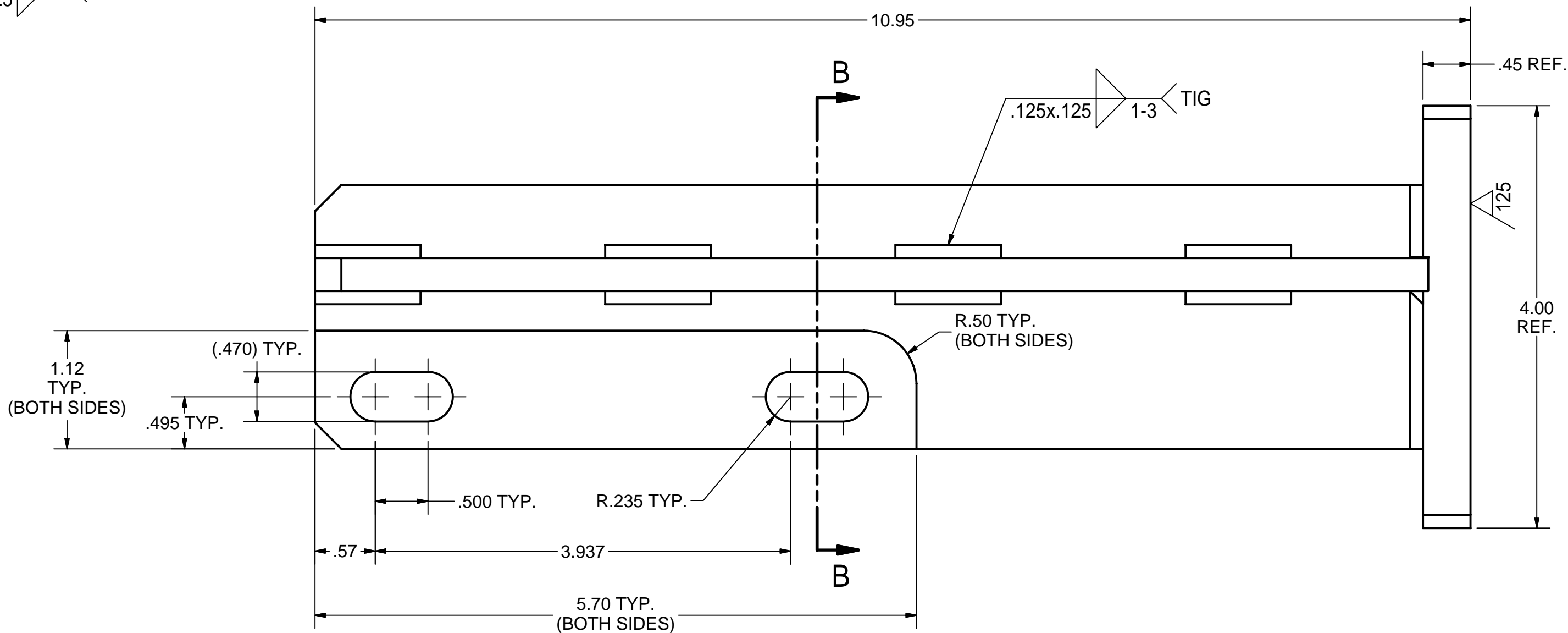
	ITEM	DWG. NO.	DESCRIPTION				G1	G2	G3	REMARKS	REV.
							QUANTITY				
D	PRINT DISTR.	PLOT DATE: 6/19/2007 CAD FILE NAME: 7102-043.idw									
7102-043 SH. NO. 2 OF 4	CR-1	UNLESS OTHERWISE SPECIFIED:  DIMENSIONS ARE IN INCHES:  TOLERANCES ON: .0 ± .02 .00 ± .010 .000 ± .005  FRACTIONS ± 1/32 ANGLES ± 0.5° ALL SURFACES 		<div><div><div>CORNELL UNIVERSITY</div><div> <b>LEPP</b></div><div>LABORATORY FOR ELEMENTARY PARTICLE PHYSICS</div></div><div><div>CORNELL UNIVERSITY</div><div>Floyd R. Newman Laboratory</div><div>Ithaca, NY 14853</div></div></div>							
		INPUT COUPLER WAVEGUIDE SUPPORT:  LEFT SUPPORT ARM, ASSEMBLY									
		CHECKED BY: VM APPROVED BY: MUL		DRAWN BY VGW	DRAWN FOR SAB	DATE 2/5/2007	SCALE 1 : 1	D	7102-043 SH. NO. 2 OF 4		REV.



REVISIONS				
SYM.	ZONE	DESCRIPTION	DATE	APP.



SECTION B-B



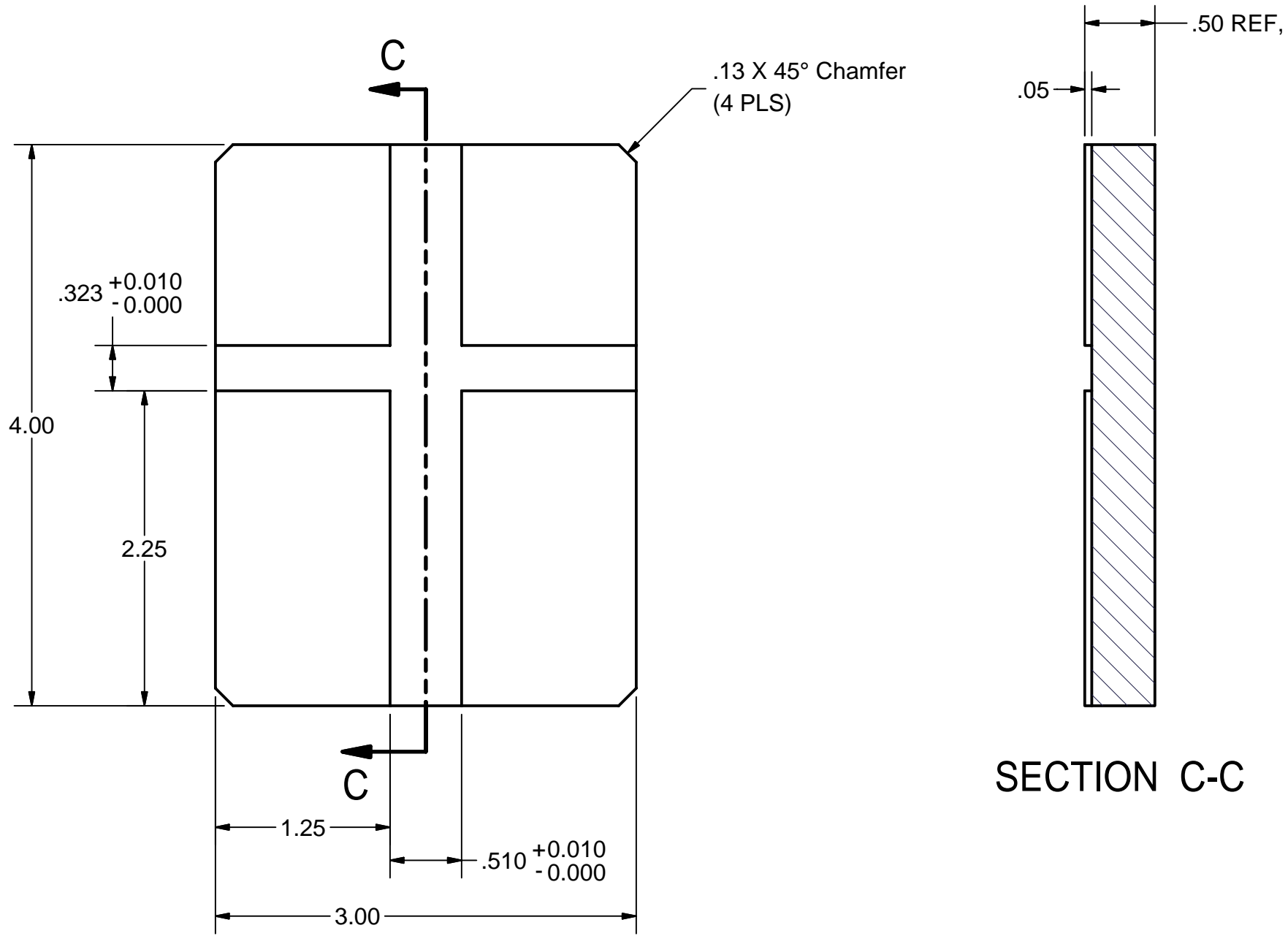
9 RIGHT SUPPORT ARM,SUB- ASSEMBLY  
FILE NAME: 7102-043  
SHEET NO.: 3  
DFT. SCALE: 1:1  
MATERIAL: AS NOTED  
QTY: 1 REQ'D  
NOTES: 1. MACHINE AFTER WELDING

FOR MACHINING LUBRICANT USE ONLY  
ALKALINE DETERGENT LUBRICANT CIMSTAR 40  
OR EQUIVALENT APPROVED BY CORNELL LEPP

TECHNICAL RESOURCE APPROVALS REQUIRED BEFORE FABRICATION			
	OK	DATE	N/A
DRAFTING (O'Connel):			
MACHINE SHOP (Kaminski):			
CHEMISTRY (Conklin):			
ELECTRONICS SHOP (Barley):			
FURNACE BRAZING (Sherwood):			
BEAM WELDING (Sears):			
WELDING OTHER (Gallagher):			
UTILITIES INTEGRATION (Gallagher):			
STOCKROOMS (Lockwood):			

ITEM	DWG. NO.	DESCRIPTION	G1	G2	G3	REMARKS	REV.
12	SHEET 4	SUPPORT ARM PLATE 2	1				
11	SHEET 4	SUPPORT ARM PLATE 1	1				
10	SHEET 4	BRACKET PLATE	1				
9	SHEET 3	RIGHT SUPPORT ARM, SUB-ASM.	X				
PLOT DATE: 6/19/2007 CAD FILE NAME: 7102-043.idw							
UNLESS OTHERWISE SPECIFIED: DIMENSIONS ARE IN INCHES: TOLERANCES ON: .0 ± .02 .00 ± .010 .000 ± .005 FRACTIONS ± 1/32 ANGLES ± 0.5° ALL SURFACES		<b>CORNELL UNIVERSITY</b> <b>LEPP</b> LABORATORY FOR ELEMENTARY-PARTICLE PHYSICS CORNELL UNIVERSITY Floyd R. Newman Laboratory Ithaca, NY 14853					
CHECKED BY: VM APPROVED BY: MUL		DRAWN BY VGV	DRAWN FOR SAB	DATE 2/5/2007	SCALE 1:1	D	7102-043 SH. NO. 3 OF 4

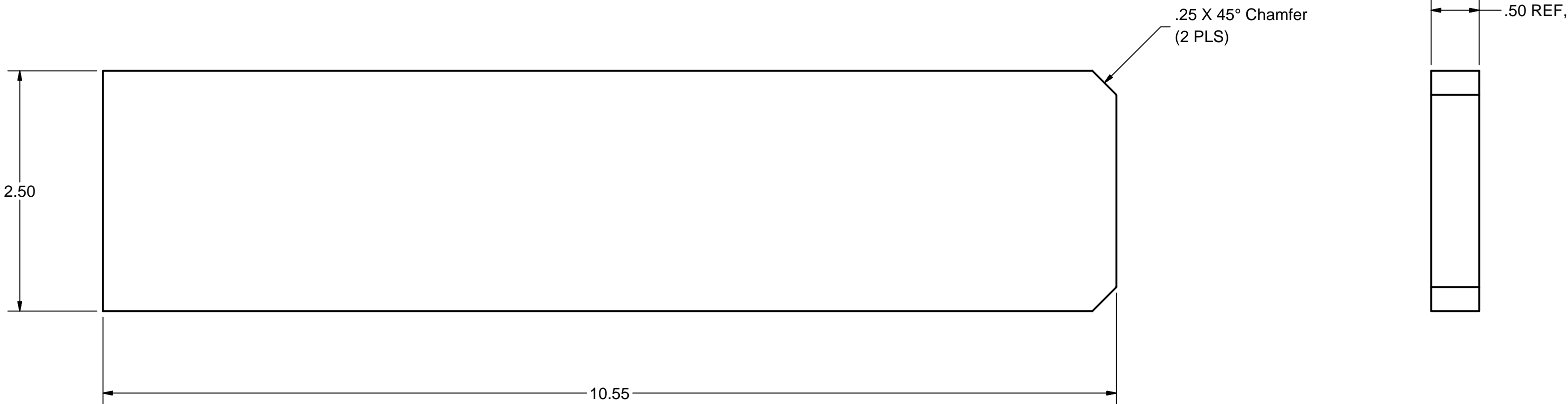
REVISIONS			
SYM.	ZONE	DESCRIPTION	DATE APP.



SECTION C-C

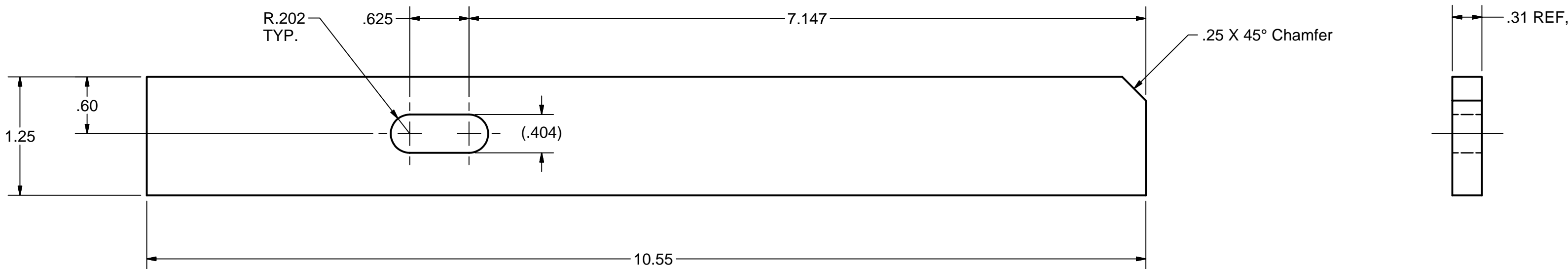
10 BRACKET PLATE

FILE NAME: 7102-043  
SHEET NO.: 4  
DFT. SCALE: 1:1  
MATERIAL: 1/2" THK. 304 STN. STL. SHEET  
QTY: 1 PER ASSEMBLY  
NOTES:



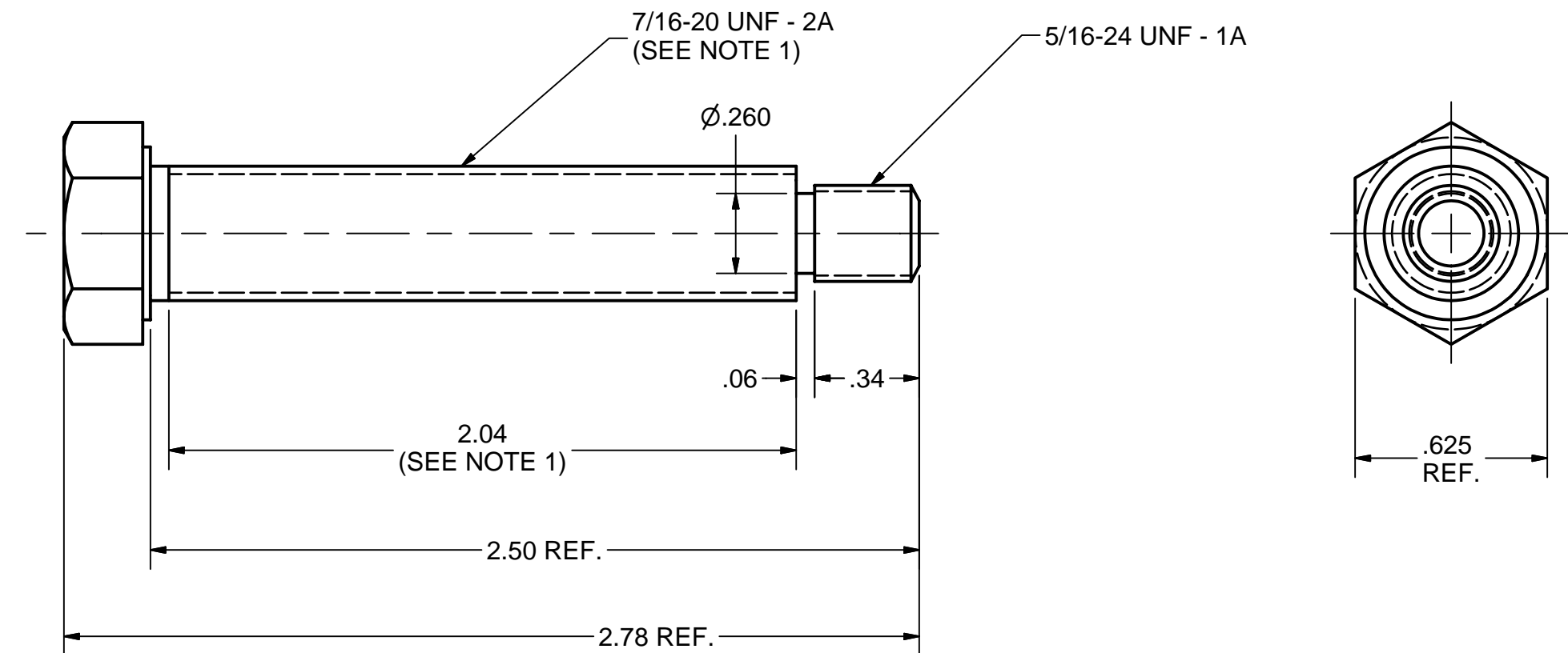
11 SUPPORT ARM PLATE 1

FILE NAME: 7102-043  
SHEET NO.: 4  
DFT. SCALE: 1:1  
MATERIAL: 1/2" THK. 304 STN. STL. SHEET  
QTY: 1 PER ASSEMBLY  
NOTES:



12 SUPPORT ARM PLATE 2

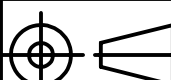

FILE NAME: 7102-043  
SHEET NO.: 4  
DFT. SCALE: 1:1  
MATERIAL: 5/16" THK. 304 STN. STL. SHEET  
QTY: 1 PER ASSEMBLY  
NOTES:



3 SUPPORT SCREW

FILE NAME: 7102-043  
SHEET NO.: 4  
DFT. SCALE: 2:1  
MATERIAL: 7/16-20 x 2.5" UNF STN. STL. HEX CAP SCREW  
QTY: 2 PER ASSEMBLY  
NOTES: 1. EXTEND THREAD TO SHOWN LENGTH.

Release of final PO version for Meyer Tool - June 19, 2007.

		ITEM	DWG. NO.		DESCRIPTION			G1	G2	G3	REMARKS	REV.
								QUANTITY				
D	PRINT DISTR.	PLOT DATE: 6/19/2007 CAD FILE NAME: 7102-043.idw										
	SH. NO. 4 OF 4	7102-043	CR-1	<div>UNLESS OTHERWISE SPECIFIED:  DIMENSIONS ARE IN INCHES; TOLERANCES ON:     .0 ± .02     .00 ± .010     .000 ± .005 FRACTIONS ± 1/32 ANGLES ± 0.5° ALL SURFACES ✓</div>	<div><div>CORNELL UNIVERSITY</div><div> <b>LEPP</b></div><div>CORNELL UNIVERSITY Floyd R. Newman Laboratory Ithaca, NY 14853</div></div> <div>INPUT COUPLER WAVEGUIDE SUPPORT: BRACKET PLATE DETAILS</div>							
REV.					CHECKED BY: VM APPROVED BY: MUL	DRAWN BY VGW	DRAWN FOR SAB	DATE 2/5/2007	SCALE	D	7102-043 SH. NO. 4 OF 4	REV.